

3-16 Hi-Hat Grooves

David O Lessons

3-16 Hi-hats over Quarter Note

Musical notation for 3-16 Hi-hats over Quarter Note. The notation is in 4/4 time. The top staff shows a series of 16 hi-hat patterns, each consisting of a quarter note followed by a triplet of eighth notes. The bottom staff shows a quarter note bass line. The hi-hat patterns are marked with an accent (>) above the first note of each triplet.

Position 1 Groove

Musical notation for Position 1 Groove. The notation is in 4/4 time. The top staff shows a series of 8 hi-hat patterns, each consisting of a quarter note followed by a triplet of eighth notes. The bottom staff shows a quarter note bass line. The hi-hat patterns are marked with an accent (>) above the first note of each triplet.

Positions 1 & 2 Groove

Musical notation for Positions 1 & 2 Groove. The notation is in 4/4 time. The top staff shows a series of 8 hi-hat patterns, each consisting of a quarter note followed by a triplet of eighth notes. The bottom staff shows a quarter note bass line. The hi-hat patterns are marked with an accent (>) above the first note of each triplet.

Positions 1,2,& 3

Musical notation for Positions 1,2,& 3. The notation is in 4/4 time. The top staff shows a series of 8 hi-hat patterns, each consisting of a quarter note followed by a triplet of eighth notes. The bottom staff shows a quarter note bass line. The hi-hat patterns are marked with an accent (>) above the first note of each triplet.

Musical notation for Positions 1,2,& 3 (continued). The notation is in 4/4 time. The top staff shows a series of 8 hi-hat patterns, each consisting of a quarter note followed by a triplet of eighth notes. The bottom staff shows a quarter note bass line. The hi-hat patterns are marked with an accent (>) above the first note of each triplet.

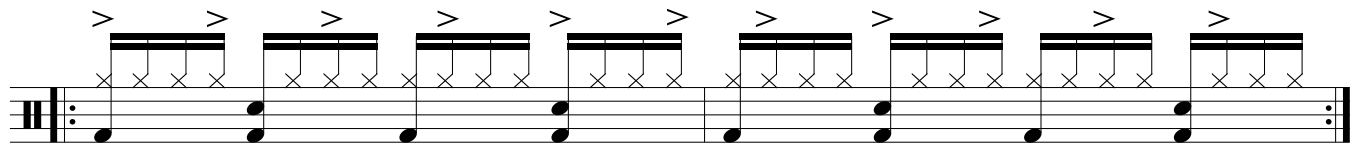
Position 1 w/Open Hats

Musical notation for Position 1 w/Open Hats. The notation is in 4/4 time. The top staff shows a series of 8 hi-hat patterns, each consisting of a quarter note followed by a triplet of eighth notes. The bottom staff shows a quarter note bass line. The hi-hat patterns are marked with an accent (>) above the first note of each triplet. Open hats are indicated by a circle (o) above the first note of the triplet, and closed hats are indicated by a plus sign (+) above the first note of the triplet.

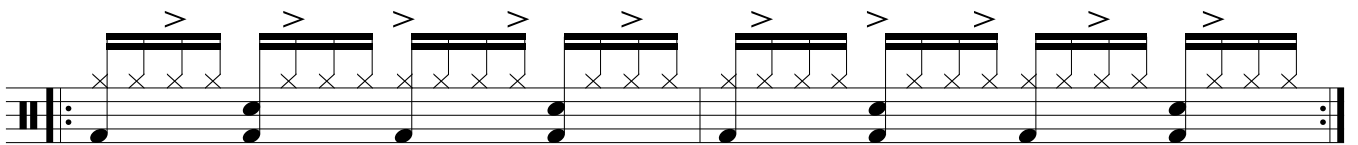
Positions 1&2 w/Open Hats

Musical notation for Positions 1&2 w/Open Hats. The notation is in 4/4 time. The top staff shows a series of 8 hi-hat patterns, each consisting of a quarter note followed by a triplet of eighth notes. The bottom staff shows a quarter note bass line. The hi-hat patterns are marked with an accent (>) above the first note of each triplet. Open hats are indicated by a circle (o) above the first note of the triplet, and closed hats are indicated by a plus sign (+) above the first note of the triplet.

Positions 1 & 3



Positions 2 & 3



[Check out the video for this lesson at DavidOLessons Youtube channel](#)